

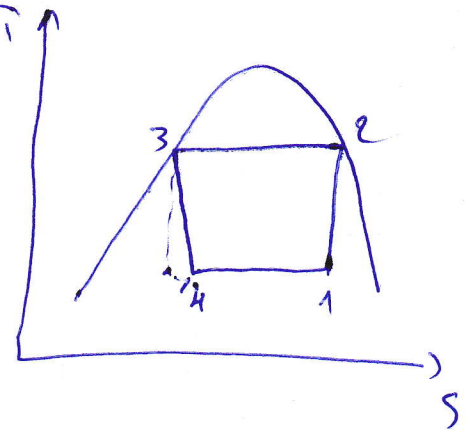
2) Comaert + Varmu  $\bar{i}$  satkhal pi qre.

$$h_{\bar{u}} = h_3 = 475,16 \text{ kJ/kg.}$$

$$Q_f = h_{\bar{u}} - h_{\bar{u}} = 994,66 \text{ kJ/kg.}$$

Qc me change pas.

$$\text{COP}_f = \frac{Q_f}{|Q_c| - Q_f} = 6,265$$



3) 2 + Vapen satuce

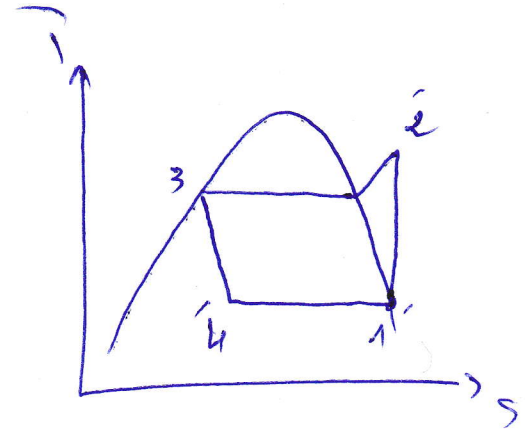
$$h_{\bar{u}} = 1593,9 \text{ kJ/kg.}$$

$$\bar{i} \rightarrow \bar{e} : \text{isobaric} \rightarrow h_{\bar{e}} = 1782,6 \text{ kJ/kg.}$$

$$Q_f = h_{\bar{e}} - h_{\bar{u}} = 1188,76 \text{ kJ/kg}$$

$$Q_c = h_{\bar{u}} - h_3 = 1307,46 \text{ kJ/kg.}$$

$$\text{COP}_f = 5,927$$



4) ③ + som refraci di vent.

$$Q_f = h_{\bar{u}} - h_{\bar{u}} = 1593,9 - 427,34 = 1166,56 \text{ kJ/kg.}$$

$$Q_c = h_{\bar{u}} - h_3 = 1782,6 - 427,34 = 1355,26$$

$$\text{COP}_f = 6,18$$

